



First Things First: Waivers and Family Support

Session Three
ADMH Webinar Series for Families

Wellness without Barriers



Our Mission:

ADMH provides comprehensive, coordinated, person-centered healthcare for teens and adults with developmental disabilities. We strive to empower individuals and their families to become advocates for their own health and wellness needs.



What is a Medical Home?



- a model of primary care that is patient-centered, comprehensive, team-based, coordinated, accessible, and focused on quality and safety
- a place where patients are treated with respect, dignity, and compassion, and enable strong and trusting relationships with providers and staff
- a model for achieving primary care excellence so that care is received in the right place, at the right time, and in the manner that best suits a patient's needs

Patient Centered Medical Home



ADMH Goals



Increase access to adult services as individuals with developmental disabilities transition from pediatric to adult healthcare services

Support and conduct comprehensive, coordinated, compassionate patient care to adolescents and adults with developmental disabilities



Dr. Andrea Videlefsky
Medical Director

ADMH Goals



Provide educational and informational activities to family members, providers and other interested parties thereby increasing public awareness

Offer leadership, training and support to other medical providers and primary care health providers in the field of adult developmental disability issues



Dr. Godfrey Mark
Clinic Physician

**Understanding
Family Support
& NOW/COMP
Waiver Funding**

**Together We Care
TogetherWeCareGA.org**

Together We Care

Together We Care is a nonprofit organization that supports families by creating a prioritized life plan to assist with resource navigation.

We have developed a roadmap for life to keep you from living from emergency to emergency and educate you on resources to get supports in place before the next emergency happens.

Website - TogetherWeCareGA.org

Session Objectives

1. Learn what Family Support Funding is and identify what agencies in my region provide it.
2. Know for what Family Support Funding will pay and how to access those funds.
3. Understand the difference in the NOW and Comp Waivers and how to apply.

What is Family Support Funding?

- Provided by the Department of Behavioral Health and Developmental Disabilities
- Available for families with children 3 and older - no age cap
- Not an entitlement program (not income based)
- Child must meet intellectual/developmental disability criteria
- Provides \$3000 per year to pay for additional services that are not covered by insurance or other funding sources
- Only available for people who do not currently have NOW/COMP waiver funding

Vocabulary - *for the purpose of today's webinar*

Agency

Provider

Vendor

State Agencies:

DBHDD - Department of Behavioral Health and Developmental Disabilities

GVRA - GA Vocational Rehabilitation Agency (also referred to as GVRA, VR, or voc rehab)

GAPP - The Georgia Pediatric Program

GMCF - GA Medical Care Foundation

ADRC - GA Aging and Disability Resource Center

Agencies or nonprofit organizations that work with DBHDD to process Family Support Applications

Currently 31 FSF providers in GA

A company that provides the actual service that you need. This can be a camp, a respite care provider, a caregiver company, a transportation company, counselor, etc.

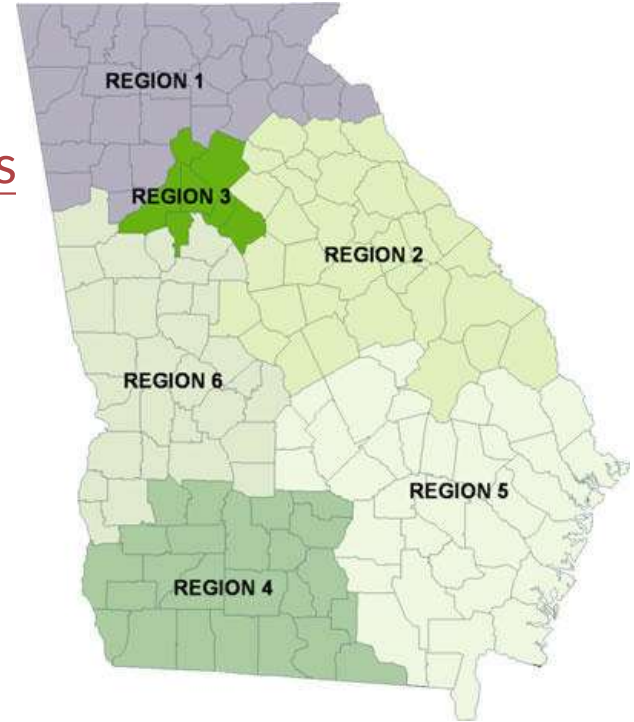
Where do I go for Family Support Funding?

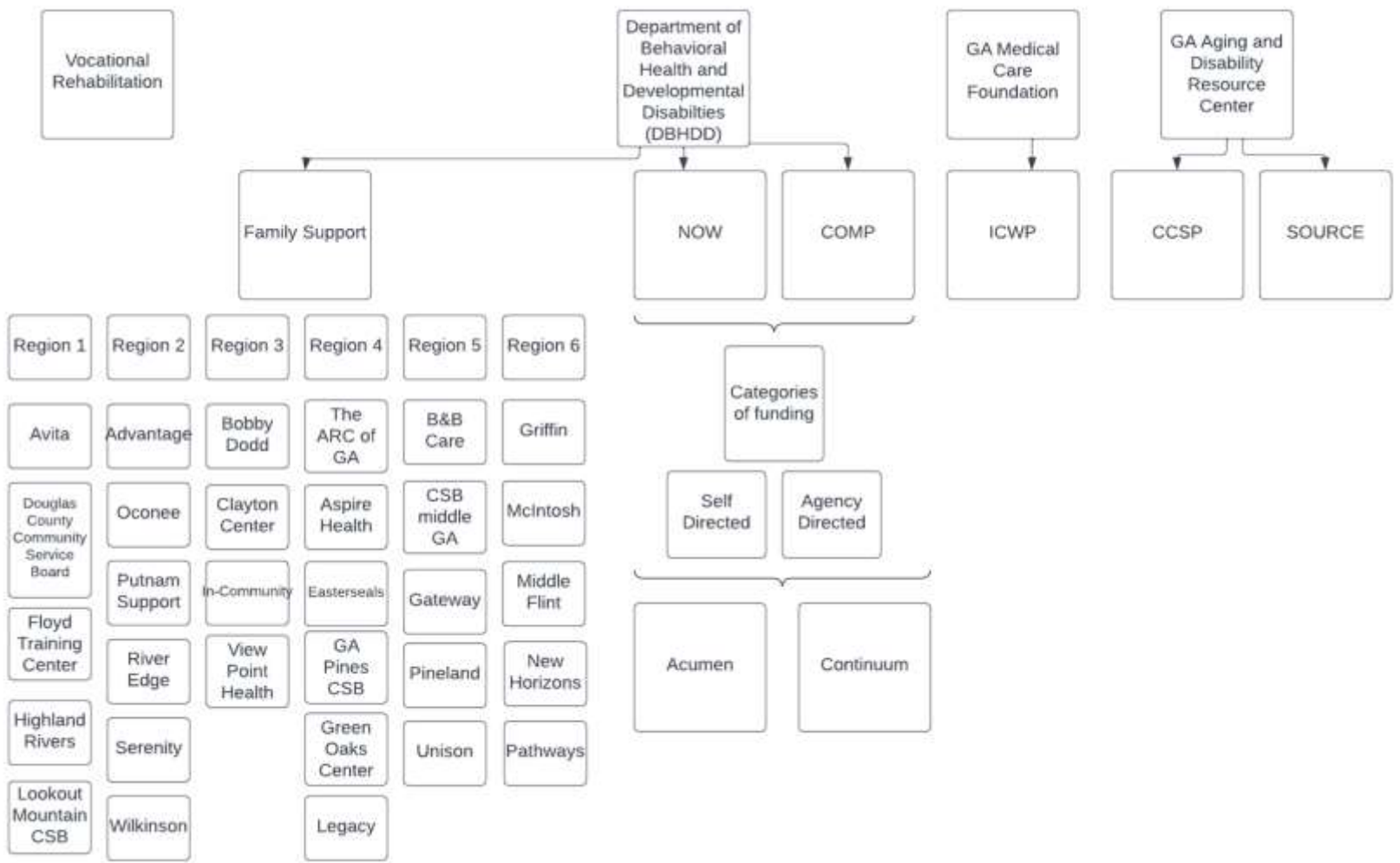
6 Regions

<https://dbhdd.georgia.gov/regional-field-offices>

Lists counties served in each region

By clicking on your region on the map, you can obtain the contact person for intakes and evaluations or call them with questions.





Which agency do I go to?

1. Visit:

<https://dbhdd.georgia.gov/be-compassionate/home-services/family-support-services>

Here you will find the list of providers that are assigned to each county that offer family support funds.

1. Once you have determined your provider, contact them to find out their intake procedure

How does the family support funding work?

- Each provider has their own procedures
- The first step is to apply with your agency
- Once approved for family support funding, you may go on a waitlist
- The fiscal year for all providers runs from July 1 - June 30
- In July, each provider will audit who needs to remain on FSF (i.e. people who are currently in the program get funding first)
- Each provider has a certain number of allocations (families who can receive funding). When someone moves from FSF to the NOW/COMP waiver or moves out of the county, that allocation becomes available
- Then, it will be on a first come, first serve basis
- Once approved, you will receive \$3000 per year to spend on eligible categories
- It can be renewed every year until you get funding for the NOW/COMP waiver

What does family support pay for?

Recreation and Community Integration

Respite Care

Community Living Support

Community Access

Routine Health

Specialized Clothing

Environmental Modifications

Specialized Equipment

Specialized Diagnostic Services

Specialized Therapeutic Services

Counseling

Parent Family Training

Specialized Nutrition

Incontinence

Supplies

Behavioral Consultation and Supports

Financial and Life Planning Assistance

Transportation

How do I access the funds once I am approved?

- Each family support provider has different procedures, so you have to become familiar with your family support provider's procedure for each category that you are utilizing
- Each category will require either:
 - An invoice for the service that was provided by a vendor
 - Receipts for what was paid for a service - submit for reimbursement
- Finding the vendors
 - Word of mouth from friends and family
 - FSF provider referral
 - GA Collaborative ASO - <https://www.georgiacollaborative.com/>

What is the NOW/COMP waiver?

- Provided by the Department of Behavioral Health and Developmental Disabilities
- Apply as soon as an IDD diagnosis is received
- Child must meet intellectual/developmental disability criteria (must have an IQ score of 70 or below)
- NOW (New Options Waiver) provides up to \$25,000 per year to pay for additional services that are not covered by insurance
- COMP (Comprehensive Waiver) provides over \$51,000 per year to pay for services and includes a residential component
- Families typically are not considered for this until after a child loses school supports

How does NOW/COMP work?

- Complete application at <https://www.georgiacollaborative.com/individuals-families/iddconnects/>
- Once you are approved, you will get a call. This does not mean you are getting funded at that time. It only means you will eventually be funded.
- You will be placed on a “Most in Need” waitlist - currently 8000 people on the waitlist.
- Many factors are considered when determining who is most in need - severity of disability, 1 or 2 parent households, is one parent able to stay home with the individual, is there a family and friend support network, age of the individual and the parents, etc
- DBHDD will call you once a year to see how “in need” you are - keep them informed when our circumstances change
- If they don't call you - you call them

What happens after I get funded?

- Once you actually get funded, you have to make a decision:
 - Agency Directed (services are directed by the state)
 - Self-Directed or Participant-Directed (services are directed by the family)
- Agency directed is easier - they manage your budget, find you people, and service providers bill the state directly, but you have less choice in who you use
- Self-Directed provides more freedom and choice in who you use and what vendors you use to provide the services to your family member, but it is more work for you
- For self directed, you must:
 - Attend an 8 hour online training to receive a certificate of completion
 - Help the DBHDD team create an ISP (Individualized Service Plan, this is like an IEP)
 - Determines what categories of funding you need based on the ISP
 - Determine how much money you need for each category and how many hours your family member will plan to participate in those services each week

What do I do after this webinar?

- Determine your Region and Family Support Provider
- Contact them to see how to apply for Family Support
- Find ways to support your assigned provider if they are a nonprofit - follow and promote their events, volunteer with them, learn about the programs they offer
- Apply for the NOW/COMP waiver
- Support our organization so that we can continue to create the free customized life plans that you need to get you these resources:
 - Like/Follow our FB and IG accounts: @togetherwecarega
 - Like/Follow our conference FB account: @togethersnconference
 - Like/Follow our conference IG account: @togetherconferences
 - Share our conference website with faith communities, private schools, and counseling centers - <https://www.togetherconference.net/>
 - View our content on YouTube: @togetherwecarega

Step Three: Guardianship



We will discuss Guardianship and alternative options.

Our speaker will be Emma Barry from the Bowden Law Firm.



Next Steps: Each 3rd Thursday



June –Transition to Adult Healthcare

July – Letter of Intent and Emergency plan

August – STABLE Accounts

September - Wills and Trusts

October – Gotchas!



Run for Health 2023



We invite you to become a sponsor, create a team, or just walk/run with us to help support the mission of ADMH.

Brook Run Park
September 10, 2023



Resources/ Webinar Recordings



Please go to our website <https://www.theadmh.org/new-resources> for the recording of this session and more information on Family Support Funding and Medicaid Waivers.

Health and Wellness

Sports and Recreation

Legal and Access to Services

- [Georgia Healthcare Directive](#)
- [Georgia Medicaid](#)
- [Guardianship Options](#)
- [Georgia Medicaid Waiver Application](#)
- [Social Security Administration](#)
- [Georgia Family Support Services](#)
- [Guardianship](#)
- [Article on Financial and Estate Planning](#)
- [GaDOE Guide to Guardianship/Conservatorship and Estate Planning](#)

Education and Transition

Thank You for Joining Us



Please give us your
feedback and additional
questions!

<https://www.surveymonkey.com/r/Z7T3RQN>

Register for the next webinar
at www.theadmh.org

